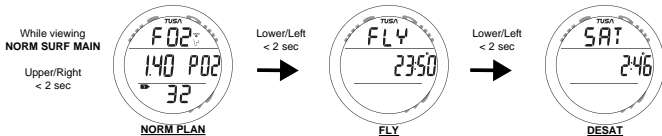
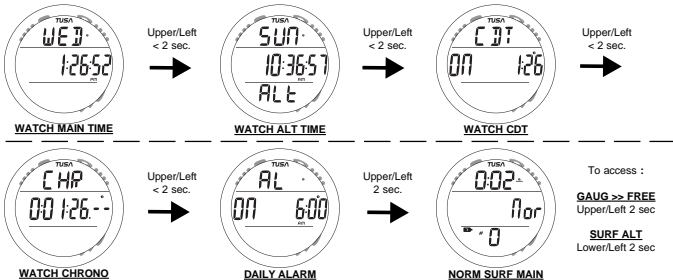


WATCH MODES

- Backlight - press Lower/Right to activate
- To change from Main Time to Alternate Time as Default - press Upper/Left momentarily then Upper/Right 2 sec
- To change from Alternate Time to Main Time as Default - press Upper/Left momentarily then Upper/Right 2 sec
- There are 3 types of Dive Mode operation - NORM (Air or Nitrox), GAUG (no Ni-O2), and FREE (no Ni-O2)
- Dive Mode - if Wet Activation is set Off, you must be in Dive Surface Mode prior to the first dive of a series



NORM, GAUG, and FREE type Dive Modes

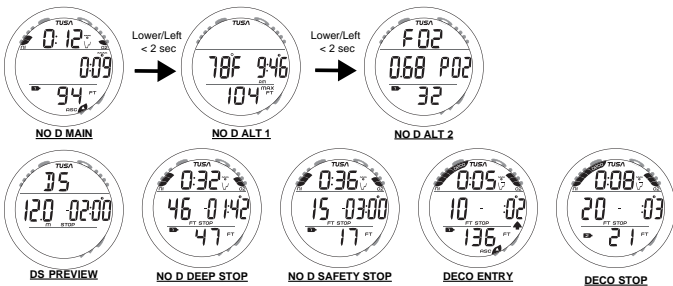
- To change (select) an Operating Mode, depress Upper/Left button 2 sec. While the Mode graphic (NORM, GAUG, or FREE) is flashing, press/release the Upper/Left button. When a Mode graphic is solid, that Mode is selected for diving.
- Entry into Dive Mode >> if Wet Activation is set Off, you must be in Dive Surface Mode prior to the first dive of a series.
- Entry into Dive Mode >> if Wet Activation is set Off or On, the unit will enter Dive Mode from any Dive Computer Mode.
- Post Dive >> reverts to Watch Default Time 10 minutes after surfacing, to return to DC Surface Mode press Upper/Left 2 sec.

SET MODES

- Refer to the Owner's Manual for detailed instructions.
- Watch Mode - set Main Time/Date, Alternate Time, CD Timer, Chronograph start/stop, Daily Alarm.
- NORM/GAUG Modes - press Lower/Left and Upper/Right to access Set F, A, U, Serial No.
- Set F (FO2) - set FO2 for GAS 1 & 2, FO2 Default
- Set A (Alarms) - set Audible, Depth, EDT, NIBG, DTR, PO2
- Set U (Utilities) - set Wet Activation, Units, No Deco Deep Stop, No Deco Safety Stop, Conservative Factor, Backlight, Sampling Rate
- To change settings - press Lower/Left to step through items, press Upper/Right to change, press Lower/Left to save
- FO2 - for Gas 1 can be set for AIR or 21 to 50%, for Gas 2 can be set for AIR or 21 to 100%

DIVE COMPUTER MODES

- Conservative Factor - when set On, NDLS are reduced to those available at the next 3,000 foot (915 meter) Altitude
- Alternate screens - revert to Main after 5 seconds
- Backlight - press Lower/Right to activate
- Alarms - press Upper/Right to acknowledge/silence.
- Gas Switch - press Upper/Left 2 sec to access Gas 1 Preview screen, then < 2 sec Gas 2; then a 2 sec press to Switch.



NO DECO DEEP STOP (DS)

- At 1/2 the Max Depth for a fixed 2 minutes.
- Preview screen while 10 FT (3 M) deeper than the DS depth.
- Stop screen appears upon ascent to 10 FT (3 M) below the DS depth.
- Disabled during High PO2 Alarm conditions.
- Disabled for the remainder of that dive when the countdown = 0:00, if ascent or descent is made, upon entry into Deco, if a High O2, or if 190 FT (57 M) exceeded.
- There is no penalty if the Stop is ignored.

NO DECO SAFETY STOP (SS)

- Preset for 15 FT (4.5 M) for a fixed 3 minutes on No Deco dives that exceed 30 FT (9 M).
- Stop screen appears upon ascent to 20 FT (6 M).
- Resets and activates again if descent is made during the countdown then ascent.
- There is no penalty if the Stop is ignored.

ALTITUDE

- Samples ambient pressure every 15 minutes while in DC Surface Mode prior to Dive #1 and for 24 hours after a dive.
- Automatic adjustment when manually activated from 3,001 to 14,000 feet (916 to 4,270 meters).
- Above 3,000 feet (915 meters) - recalibrates to adjust Depth readings and NDLS every 1,000 feet (305 meters)
- DO NOT use at a different altitude until the unit automatically adjusts to the new altitude.

LOW BATTERY

- Replace with a 3 volt, CR2430, Lithium battery.
- Settings and calculations for repetitive dives are retained while the battery is removed.

